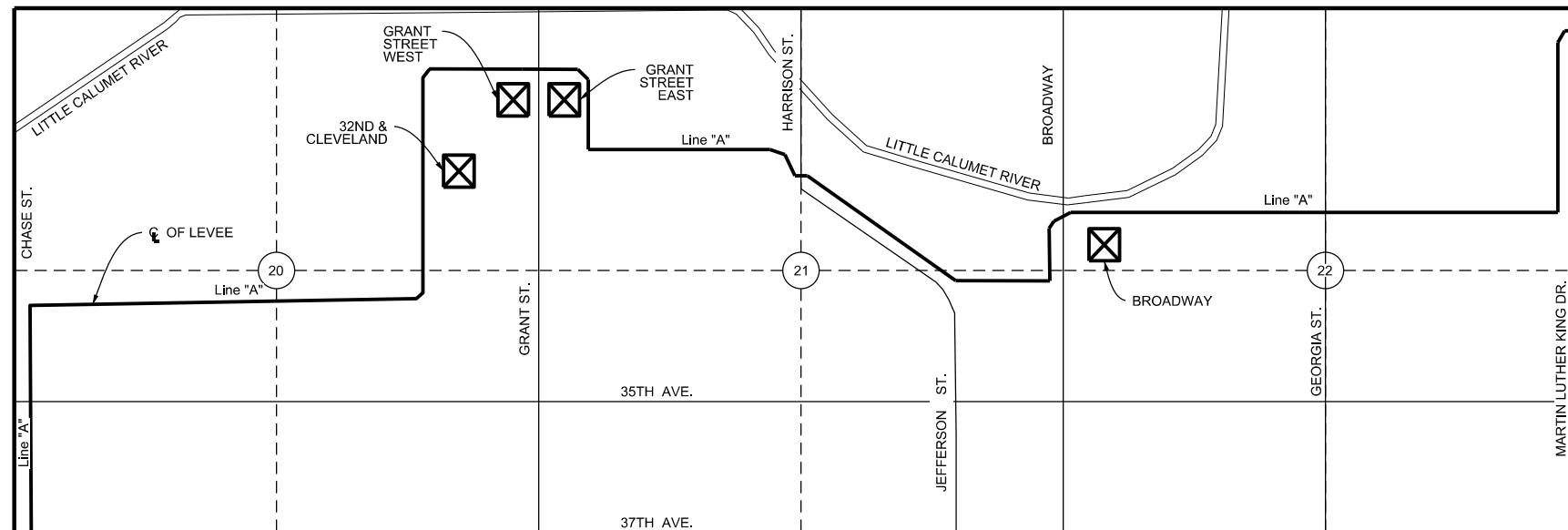




LITTLE CALUMET RIVER BASIN DEVELOPMENT
COMMISSION MEMBERS

- WILLIAM BAKER, Chairman
- TOM WICHLINSKI, Vice Chairman
- THOMAS GOZDECKI, Treasurer
- LEVON WHITTAKER, Secretary
- ANTHONY BROADNAX, Member
- DAVID CASTELLANOS, Member
- DEREK NIMETZ, DNR Representative
- RONALD WARE, JR., Member
- ROBERT OCHI, Member
- DANIEL REPAY, Executive Director
- DAVID WICKLAND, Commission Attorney

Gary South Levee Culvert and I-Wall Maintenance

Gary, Indiana



-  = AREA OF DETAIL
-  = PUMP STATIONS



**Little Calumet River
Basin Development
Commission**
900 Ridge Road, Suite H
Munster, IN 46321

REVISION	DESCRIPTION	DATE

PRELIMINARY

Title Sheet

**Gary South Levee
Culvert Maintenance**



INDIANA DEPARTMENT OF TRANSPORTATION
CURRENT STANDARD SPECIFICATIONS & DETAIL
STANDARDS ARE TO BE USED WITH THESE PLANS

SEPTEMBER 2024

UTILITIES

GENERAL NOTES

<p>GAS AND ELECTRIC N.I.P.S.Co. 1460 E. 15TH AVENUE GARY, IN 46402 219-886-5671</p> <p>TELEPHONE AT&T 302 SOUTH EAST STREET CROWN POINT, IN 46307 219-662-4400</p> <p>CABLE T.V. COMCAST 844 - 169TH STREET HAMMOND, IN 46324 866-594-1234</p>	<p>SEWER GARY SANITARY DISTRICT 3600 WEST 3RD AVENUE GARY, IN 46406 219-944-0595</p> <p>WATER INDIANA AMERICAN WATER 650 MADISON STREET, P.O. BOX 64486 GARY, IN 46401 219-880-2331</p> <p>GARY PUBLIC WORKS & SAFETY 401 BROADWAY ST., SUITE 300 GARY, IN 46402 219-881-1310</p>	<p>ALL OTHER UTILITIES INDIANA UNDERGROUND PLANT PROTECTION SERVICE 1-800-382-5544</p>
---	--	---

1	NO CONSTRUCTION IS TO TAKE PLACE BEYOND THE EXISTING RIGHT-OF-WAY, UNLESS OTHERWISE INDICATED.
2	THIS SET OF PLANS SHALL NOT BE CONSTRUED TO BE A PROPERTY RETRACEMENT SURVEY. WHERE APPARENT PROPERTY LINE, AND CORNER INFORMATION IS SHOWN, IT IS BASED ON PHYSICAL EVIDENCE OR TESTIMONY.
3	THE CONTRACTOR SHALL MAINTAIN ALL EXISTING UTILITIES AND SERVICE CONNECTIONS.
4	ALL UTILITIES SHALL BE FIELD VERIFIED BY THE CONTRACTOR. UTILITY LOCATIONS SHOWN ON THE DRAWINGS ARE APPROXIMATE.
5	INDIANA DEPARTMENT OF TRANSPORTATION ROAD STANDARDS CURRENT AT THE TIME OF BID WILL GOVERN AS THE PROJECT ROAD STANDARDS, UNLESS OTHERWISE NOTED.
6	ALL REGULATORY AND CONSTRUCTION MAINTENANCE SIGNS SHALL BE MAINTAINED DURING ALL PHASES OF CONSTRUCTION.
7	THE CONTRACTOR SHALL CONDUCT A SEARCH FOR PROPERTY CORNER MONUMENTS PRIOR TO CONSTRUCTION. ALL MONUMENTS FOUND SHALL BE WITNESSED WITH AT LEAST TWO TEMPORARY POINTS. TEMPORARY WITNESS POINTS SHALL BE MAINTAINED AND PROTECTED BY THE CONTRACTOR DURING CONSTRUCTION. ORIGINAL MONUMENTS SHALL BE STORED BY THE CONTRACTOR DURING CONSTRUCTION AND RESTORED TO THEIR ORIGINAL LOCATION FOLLOWING CONSTRUCTION.
8	NO SLAG AGGREGATE PRODUCTS SHALL BE USED ON THIS PROJECT.
9	NO EQUIPMENT SHALL BE STAGED ON THE LEVEE OVERNIGHT. FULL ACCESS IS NECESSARY FOR FLOOD FIGHTING ACTIVITIES.
10	WORK SHALL ONLY BE PERFORMED IN AREAS IDENTIFIED NEAR THE LEVEE.
11	VISUAL MONITORING FOR ANY SIGNS OF DISTRESS ON THE LEVEE, ESPECIALLY DURING EXCAVATION, SHALL BE REPORTED TO THE FIELD ENGINEER.
12	THE LEVEL OF PROTECTION OF THE LEVEE IS AT ELEVATION 602.00 (NAVD 88)

INDEX

1	TITLE SHEET	9	STA. 118+00 - 125+00
2	INFORMATION SHEET	10	STA. 149+00 - 156+00
3	STA. 20+00 - 28+00	11	STA. 178+00 - 186+00
4	STA. 54+00 - 62+00	12	STA. 186+00 - 194+00
5	STA. 78+00 - 84+00	13	STA. 202+00 - 210+00
6	STA. 84+00 - 92+00		
7	STA. 101+00 - 109+00		
8	STA. 109+00 - 118+00		

NOTE: TOPOGRAPHIC DATA FOR INFORMATIONAL PURPOSES ONLY.



Little Calumet River Basin Development Commission

900 Ridge Road, Suite H
Munster, IN 46321

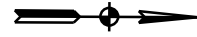
REVISION DESCRIPTION DATE

PRELIMINARY

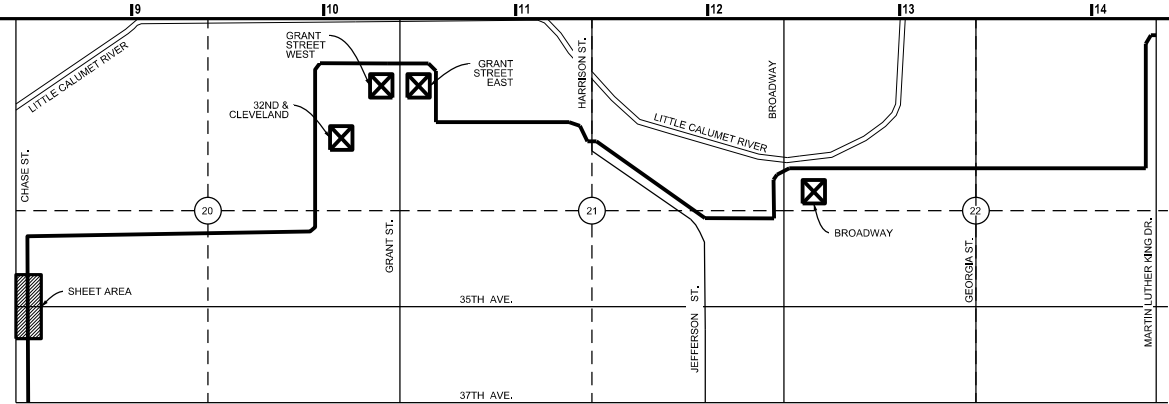
Information Sheet

Gary South Levee Culvert Maintenance

CP1: N: 1477280.5800
 E: 420240.8640
 ELEV: 601.91 NAVD88
 USACE DISK 715
 ON I WALL



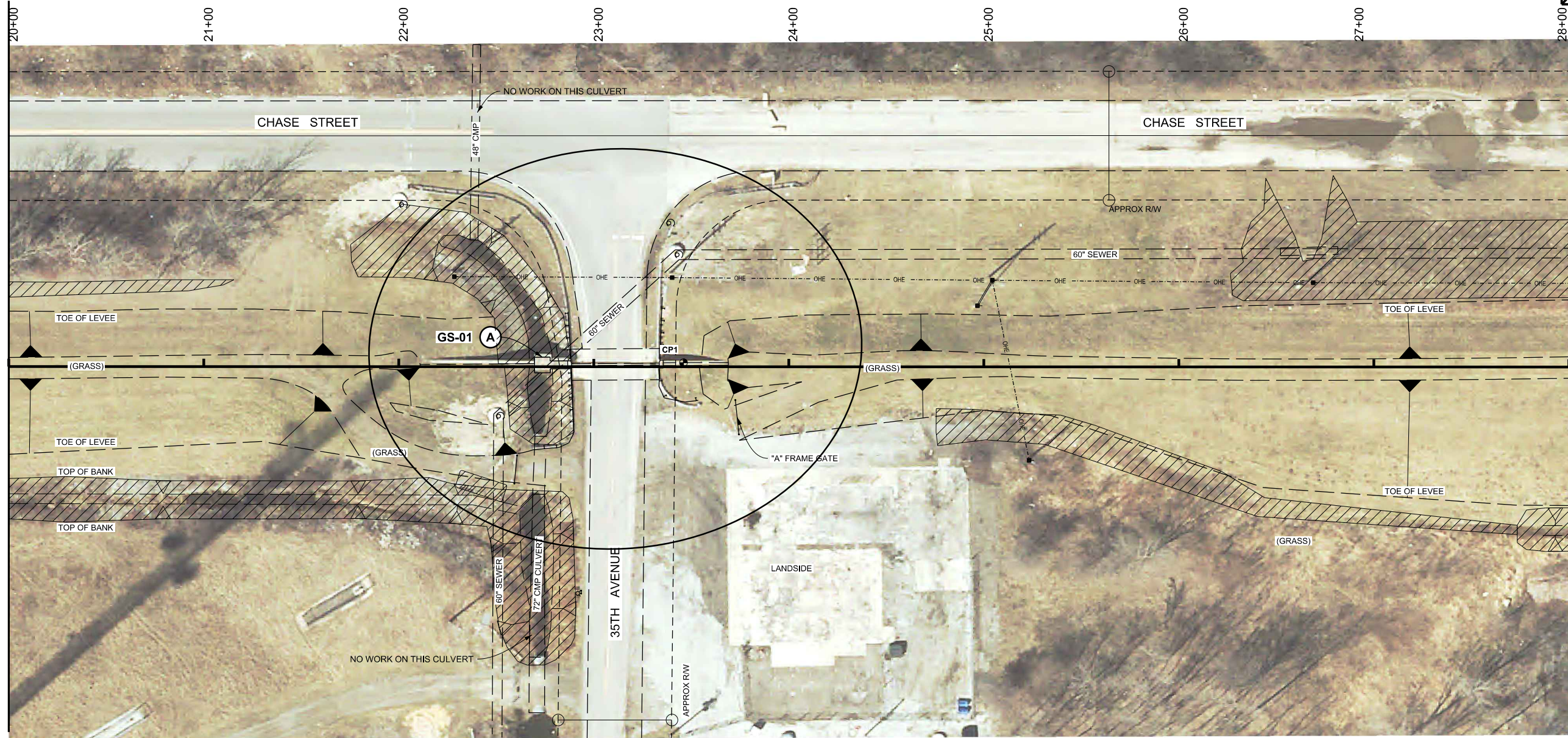
0 15 30 45 60
 SCALE IN FEET
 SCALE: 1" = 30'



Little Calumet River Basin Development Commission

900 Ridge Road, Suite H
 Munster, IN 46321

▨ = AREA OF DETAIL
 ⊠ = PUMP STATIONS



BREAK LINE
 NO WORK STA. 28+00 TO 54+00
 SEE SHEET 4

REVISION	DESCRIPTION	DATE

(A) STRUCTURE MAINTENANCE

- REMOVE DEBRIS ON RIVERSIDE AND LANDSIDE OF FLOODWALL
- FLAPGATE ON RIVERSIDE SHALL BE EXERCISED TO VERIFY PROPER OPERATION
- EXERCISE SLUICE GATE, GREASE TO VERIFY PROPER OPERATION

PRELIMINARY

Existing Levee
 Sta. 20+00 to 28+00

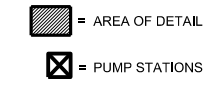
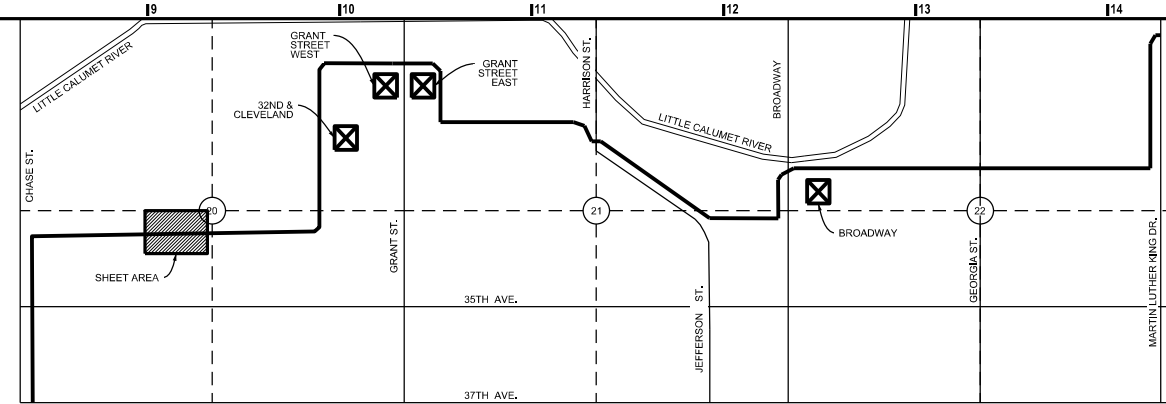
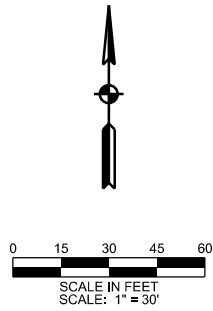
**Gary South Levee
 Culvert Maintenance**



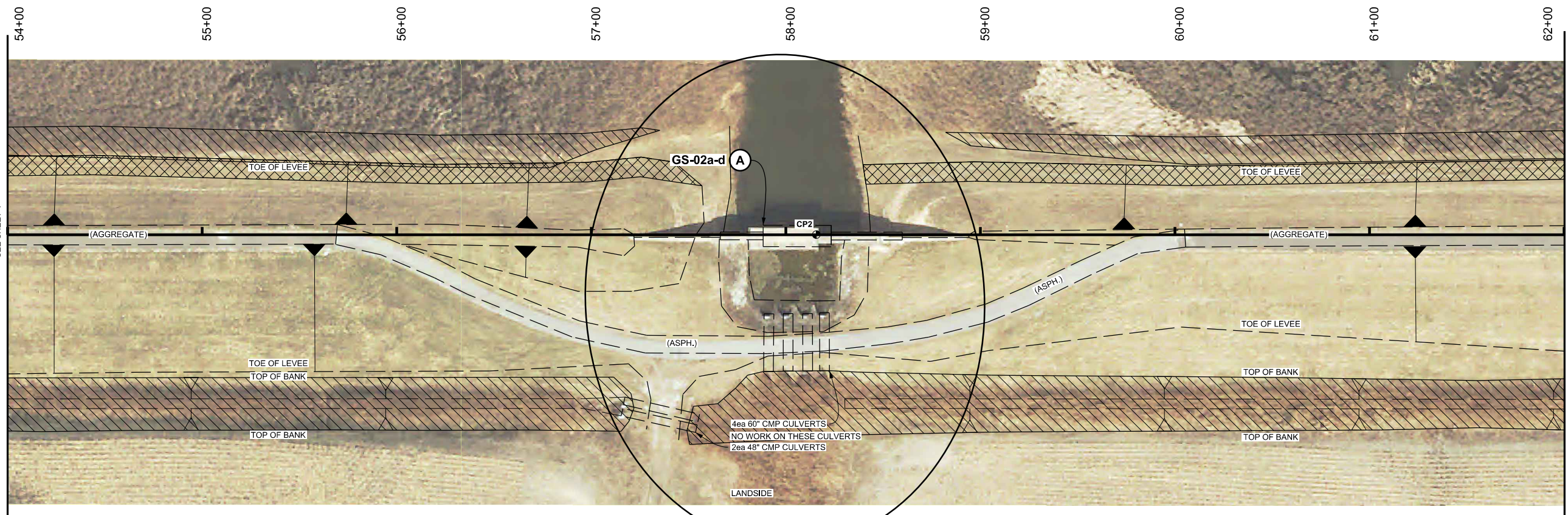
Little Calumet River Basin Development Commission

900 Ridge Road, Suite H
Munster, IN 46321

CP2: N: 1478522.69
E: 422439.83
ELEV: 602.60 NAVD88
USACE DISK 716
ON I WALL



RIVERSIDE



BREAK LINE
NO WORK STA. 28+00 TO 54+00
SEE SHEET 4

BREAK LINE
NO WORK STA. 62+00 TO 78+00
SEE SHEET 6

4ea 60" CMP CULVERTS
NO WORK ON THESE CULVERTS
2ea 48" CMP CULVERTS

- A STRUCTURE MAINTENANCE**
- REMOVE DEBRIS ON RIVERSIDE AND LANDSIDE OF FLOODWALL
 - FLAPGATE ON RIVERSIDE SHALL BE EXERCISED TO VERIFY PROPER OPERATION
 - EXERCISE SLUICE GATE, GREASE TO VERIFY PROPER OPERATION

REVISION	DESCRIPTION	DATE

PRELIMINARY

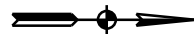
Existing Levee
Sta. 54+00 to 62+00

**Gary South Levee
Culvert Maintenance**

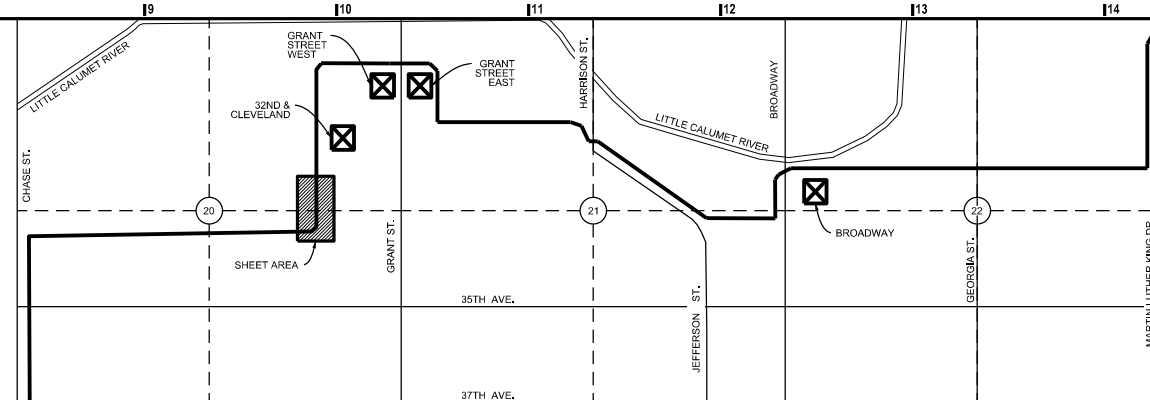


Little Calumet River Basin Development Commission

900 Ridge Road, Suite H
Munster, IN 46321



0 15 30 45 60
SCALE IN FEET
SCALE: 1" = 30'



= AREA OF DETAIL
 = PUMP STATIONS

RIVERSIDE

79+00 80+00 81+00 82+00 83+00 84+00



GS-03 (A)

(A) STRUCTURE MAINTENANCE

- REMOVE DEBRIS ON RIVERSIDE AND LANDSIDE OF FLOODWALL
- FLAPGATE ON RIVERSIDE SHALL BE EXERCISED TO VERIFY PROPER OPERATION
- EXERCISE SLUICE GATE, GREASE TO VERIFY PROPER OPERATION

REVISION	DESCRIPTION	DATE

PRELIMINARY

Existing Levee
Sta. 78+00 to 84+00

**Gary South Levee
Culvert Maintenance**

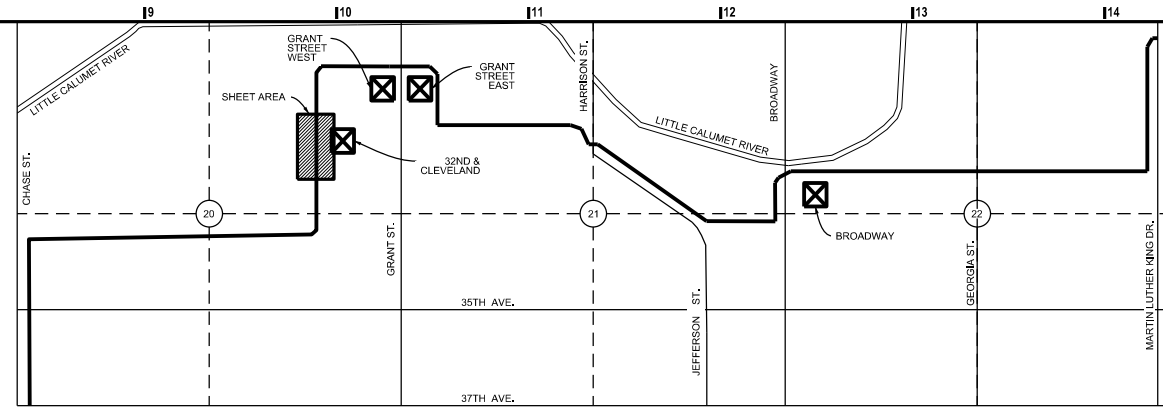


Little Calumet River Basin Development Commission

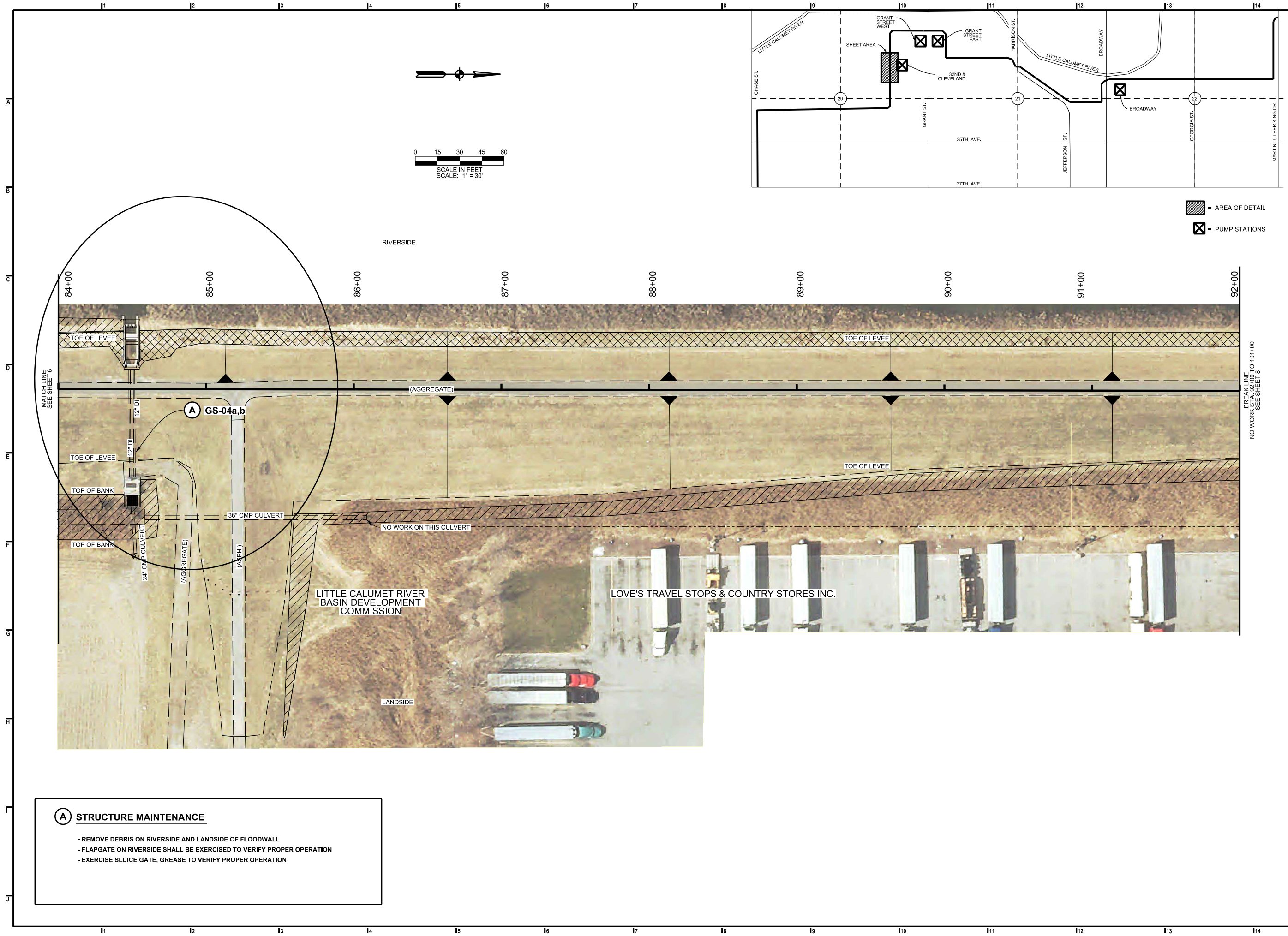
900 Ridge Road, Suite H
Munster, IN 46321



0 15 30 45 60
SCALE IN FEET
SCALE: 1" = 30'



▨ = AREA OF DETAIL
X = PUMP STATIONS



A STRUCTURE MAINTENANCE

- REMOVE DEBRIS ON RIVERSIDE AND LANDSIDE OF FLOODWALL
- FLAPGATE ON RIVERSIDE SHALL BE EXERCISED TO VERIFY PROPER OPERATION
- EXERCISE SLUICE GATE, GREASE TO VERIFY PROPER OPERATION

REVISION	DESCRIPTION	DATE

PRELIMINARY

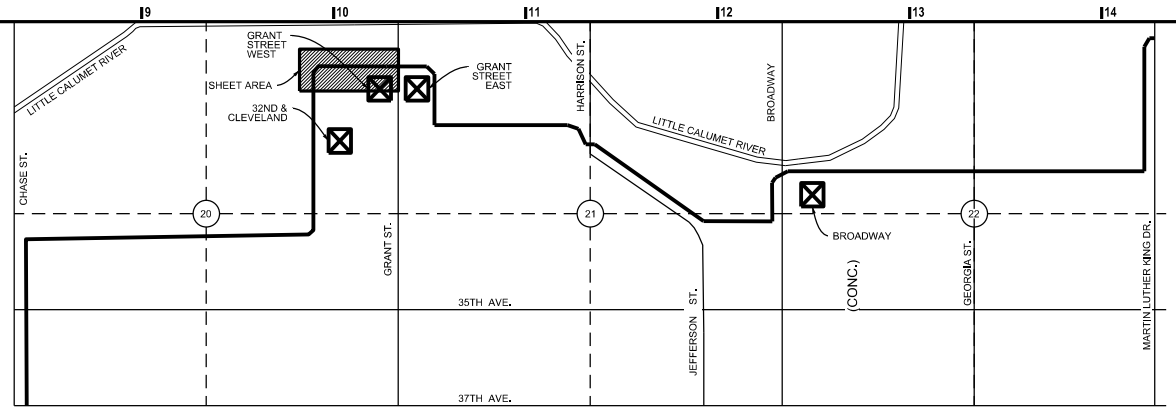
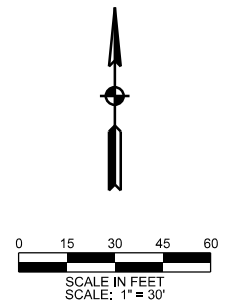
Existing Levee
Sta. 84+00 to 92+00

**Gary South Levee
Culvert Maintenance**

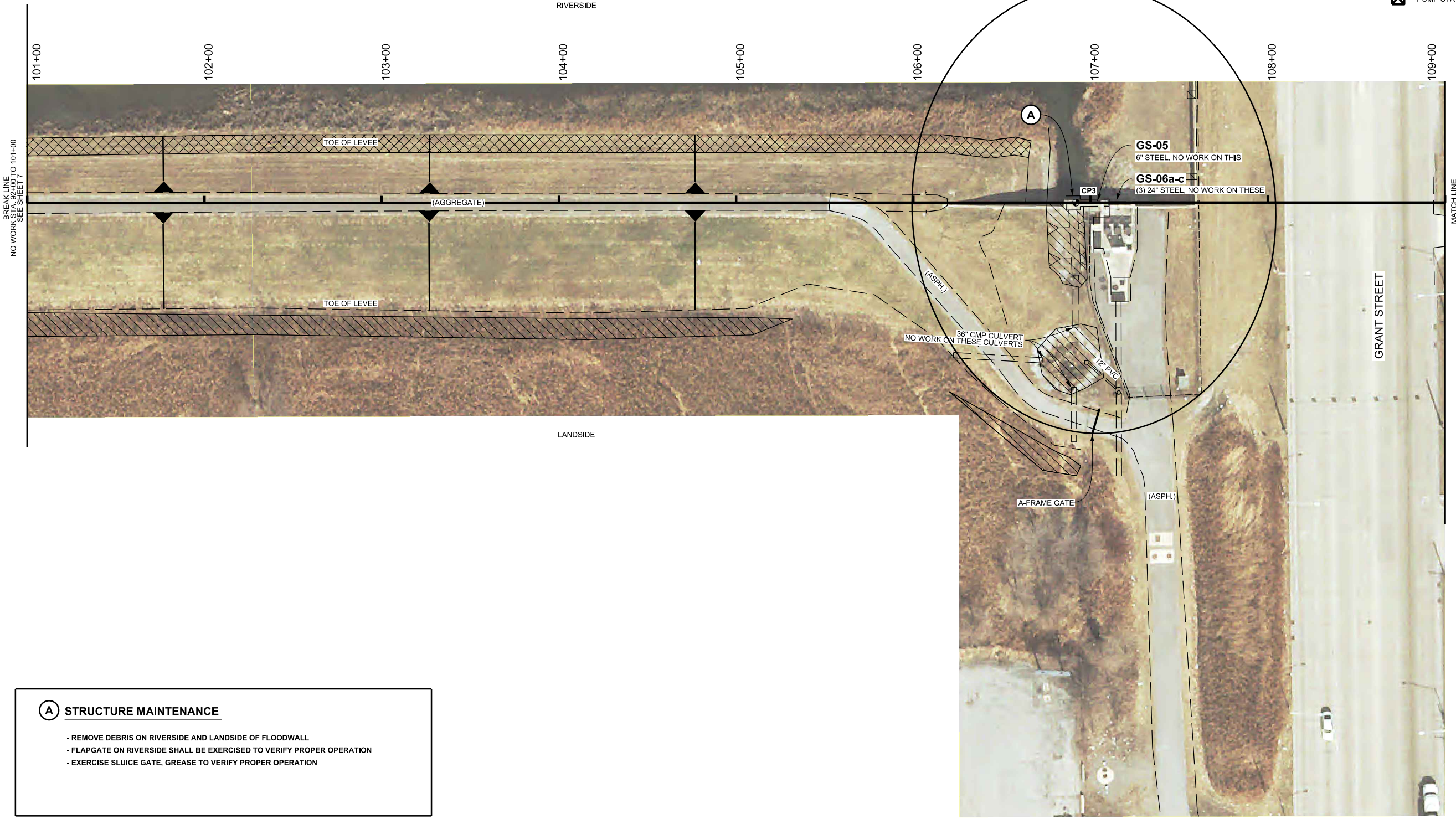


Little Calumet River Basin Development Commission
 900 Ridge Road, Suite H
 Munster, IN 46321

CP3: N: 148615.47
 E: 425222.23
 ELEV: 602.42 NAVD88
 USACE DISK 717
 ON I WALL



▨ = AREA OF DETAIL
 ⊠ = PUMP STATIONS



A STRUCTURE MAINTENANCE

- REMOVE DEBRIS ON RIVERSIDE AND LANDSIDE OF FLOODWALL
- FLAPGATE ON RIVERSIDE SHALL BE EXERCISED TO VERIFY PROPER OPERATION
- EXERCISE SLUICE GATE, GREASE TO VERIFY PROPER OPERATION

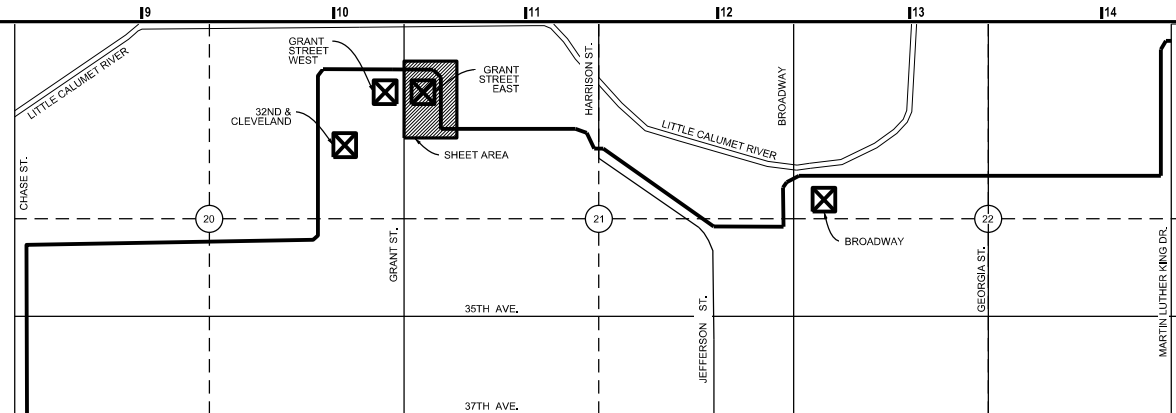
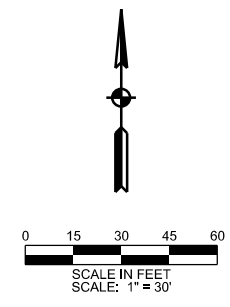
REVISION	DESCRIPTION	DATE

PRELIMINARY

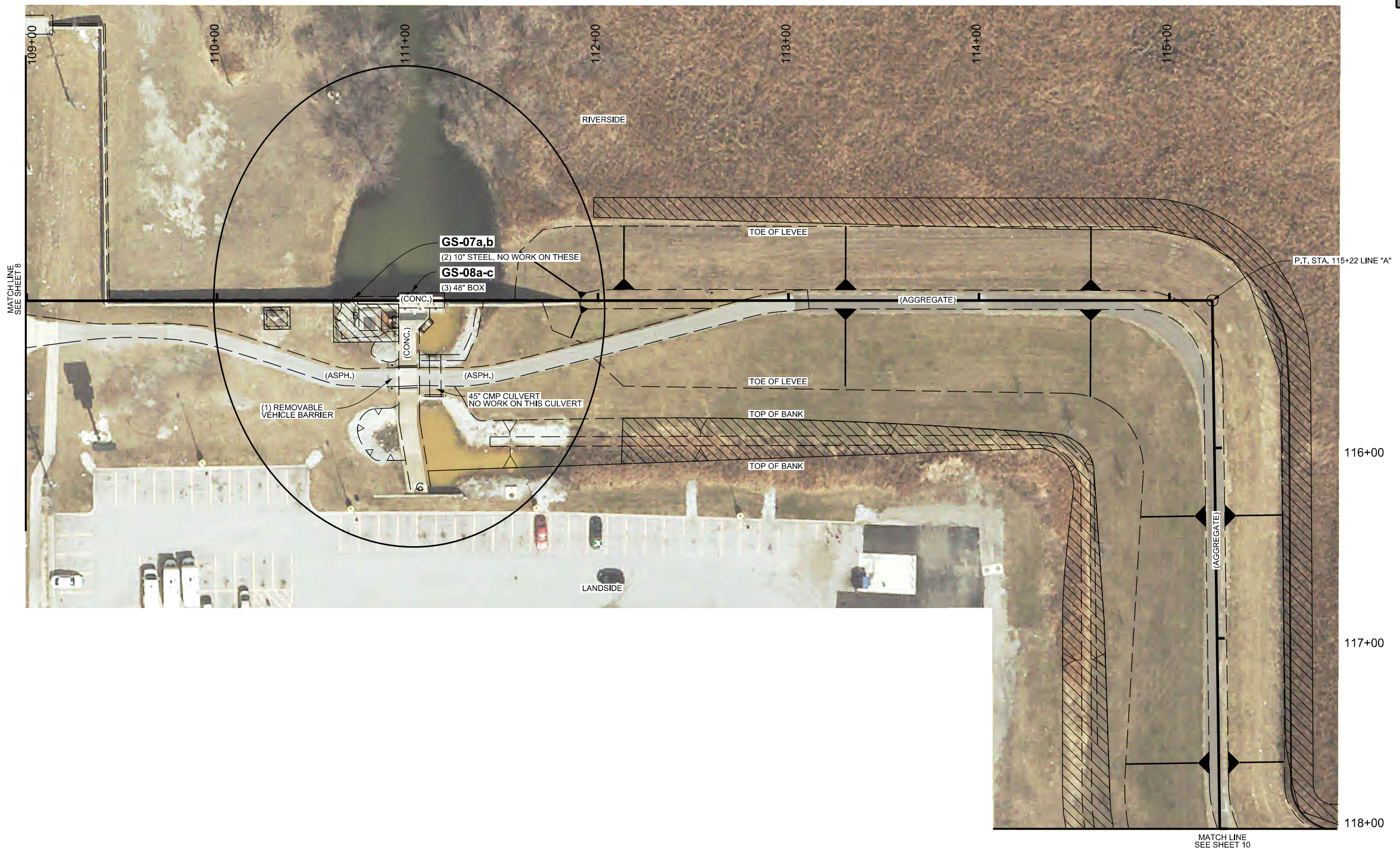
Existing Levee
 Sta. 101+00 to 109+00
**Gary South Levee
 Culvert Maintenance**



Little Calumet River Basin Development Commission
 900 Ridge Road, Suite H
 Munster, IN 46321



- = AREA OF DETAIL
- = PUMP STATIONS



MATCH LINE
SEE SHEET 8

MATCH LINE
SEE SHEET 10

REVISION	DESCRIPTION	DATE

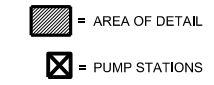
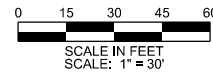
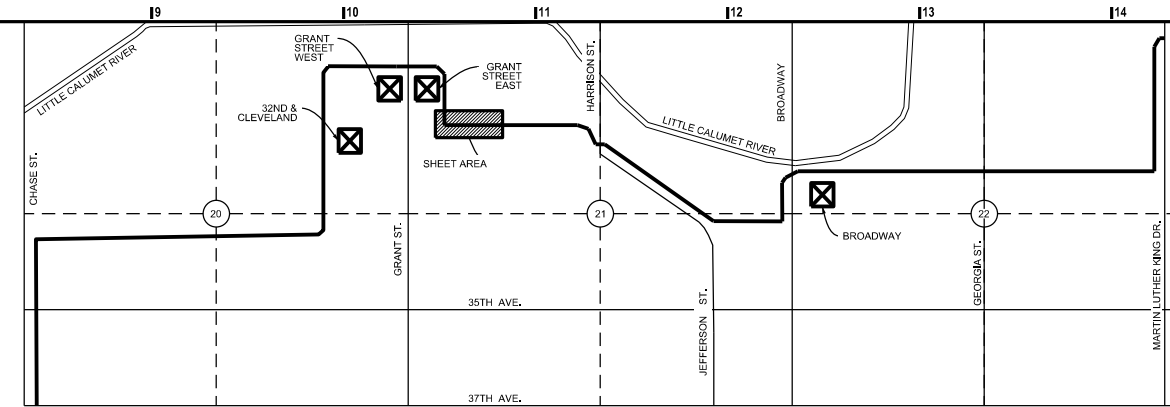
PRELIMINARY

Existing Levee
 Sta. 109+00 to 118+00
**Gary South Levee
 Culvert Maintenance**



Little Calumet River Basin Development Commission

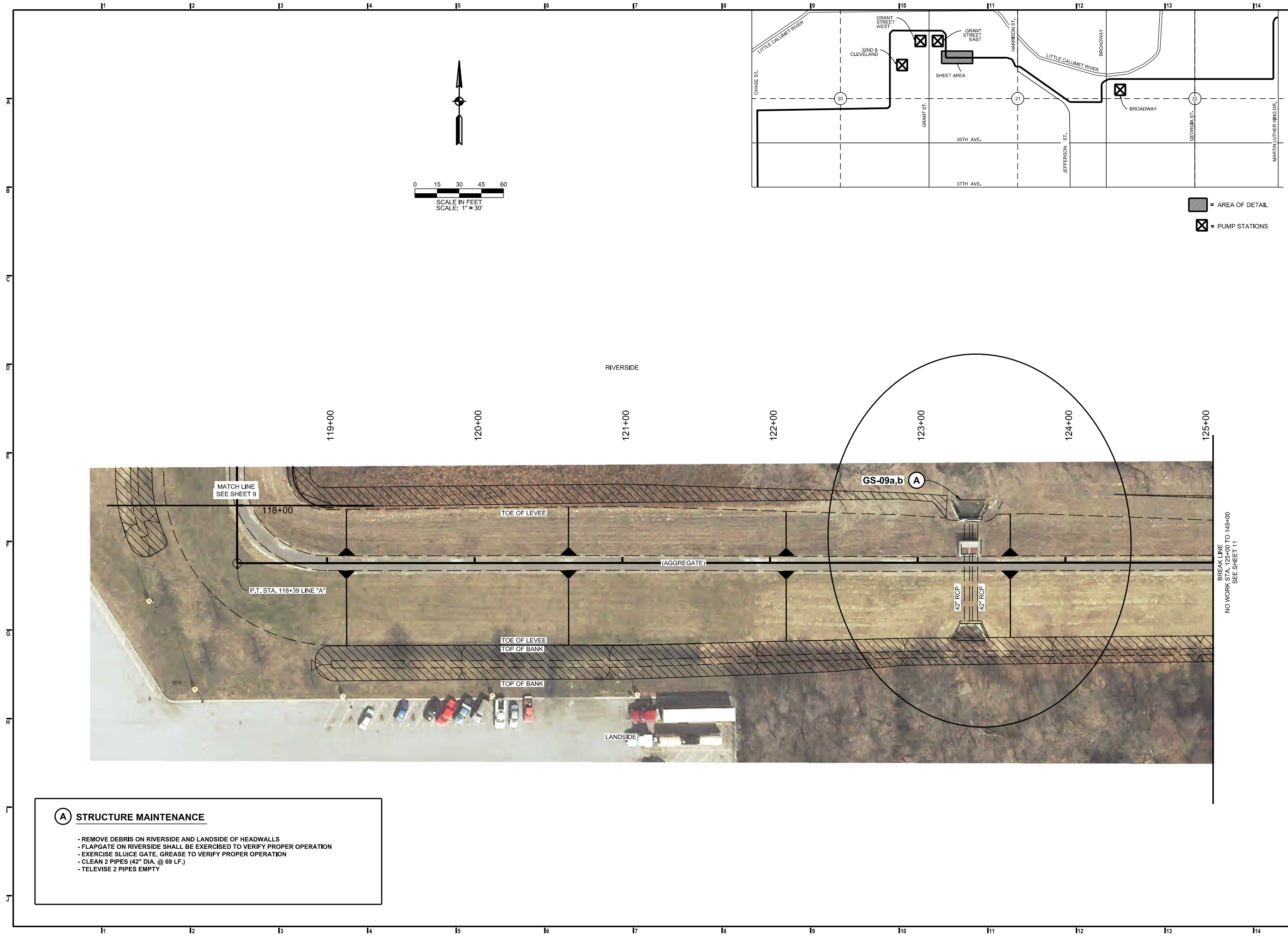
900 Ridge Road, Suite H
Munster, IN 46321



REVISION	DESCRIPTION	DATE

PRELIMINARY

Existing Levee
Sta. 118+00 to 125+00
Gary South Levee Culvert Maintenance



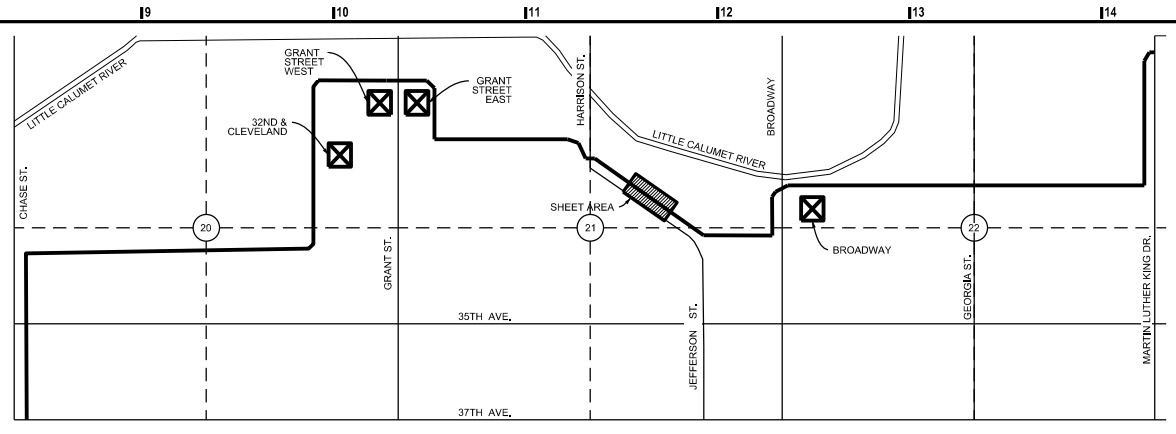
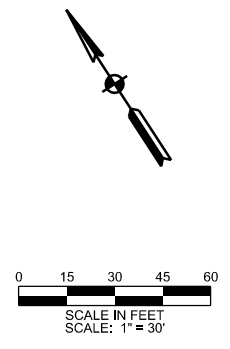
- A STRUCTURE MAINTENANCE**
- REMOVE DEBRIS ON RIVERSIDE AND LANDSIDE OF HEADWALLS
 - FLAPGATE ON RIVERSIDE SHALL BE EXERCISED TO VERIFY PROPER OPERATION
 - EXERCISE SLUICE GATE, GREASE TO VERIFY PROPER OPERATION
 - CLEAN 2 PIPES (42" DIA. @ 69 LF.)
 - TELEVISION 2 PIPES EMPTY

NO WORK STA. 125+00 TO 148+00
SEE SHEET 11

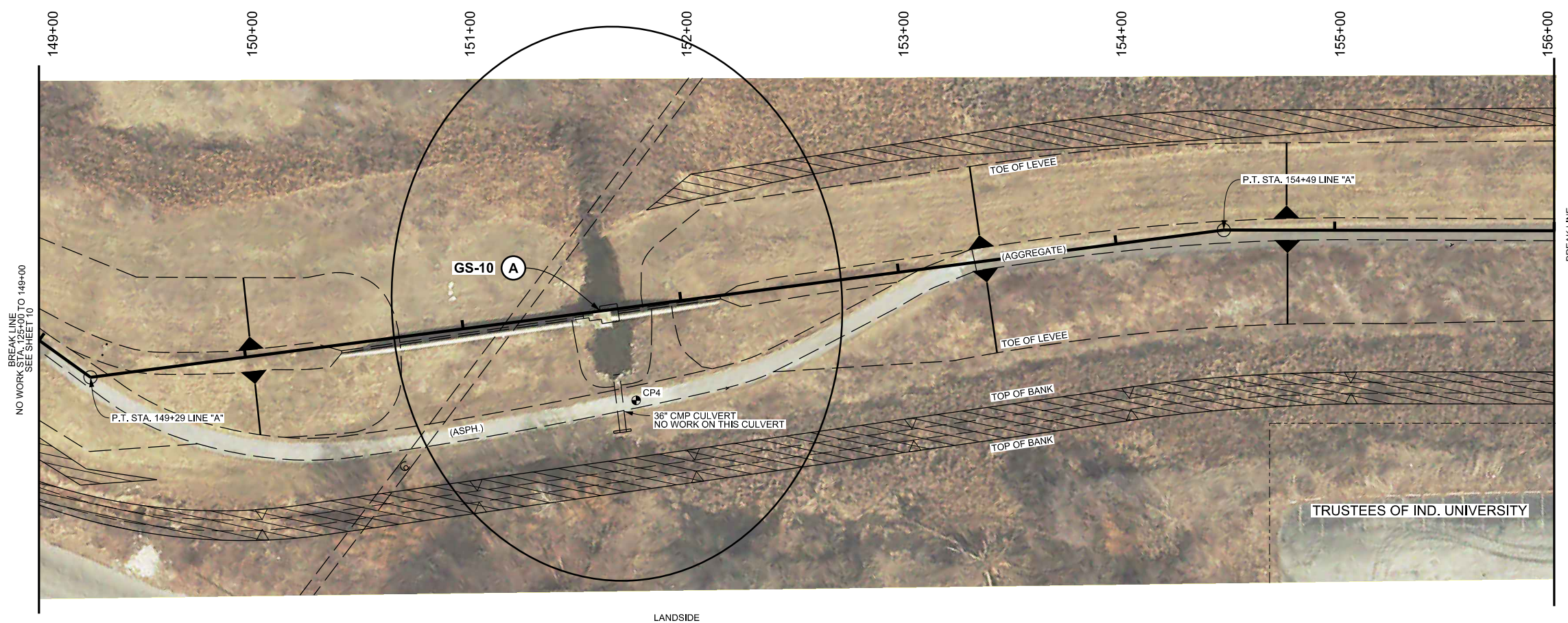


Little Calumet River Basin Development Commission
 900 Ridge Road, Suite H
 Munster, IN 46321

CP4: N: 1479095.12
 E: 428666.71
 ELEV: 593.74 NAVD88
 DESCRIPTION:
 MAG NAIL SET
 IN ASPHALT PATH



▨ = AREA OF DETAIL
 ⊗ = PUMP STATIONS



NO WORK STA. 125+00 TO 149+00 SEE SHEET 10

NO WORK STA. 156+00 TO 170+00 SEE SHEET 12

A STRUCTURE MAINTENANCE

- REMOVE DEBRIS ON RIVERSIDE AND LANDSIDE OF FLOODWALL
- FLAPGATE ON RIVERSIDE SHALL BE EXERCISED TO VERIFY PROPER OPERATION
- EXERCISE SLUICE GATE, GREASE TO VERIFY PROPER OPERATION

REVISION	DESCRIPTION	DATE

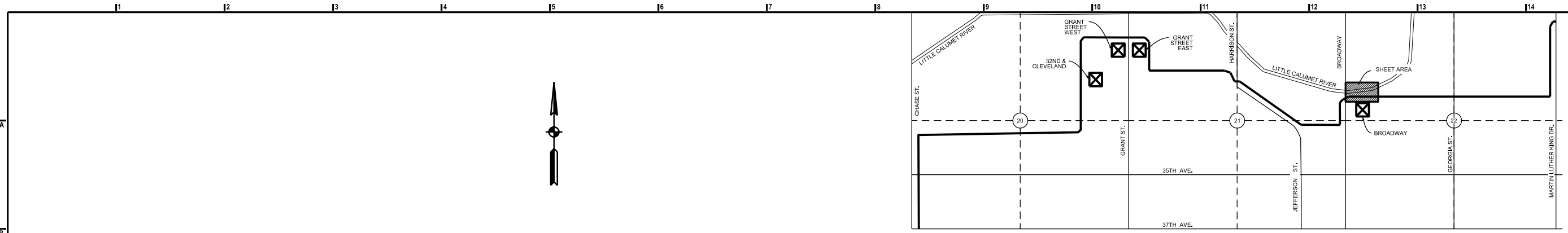
PRELIMINARY

Existing Levee
 Sta. 149+00 to 156+00
**Gary South Levee
 Culvert Maintenance**

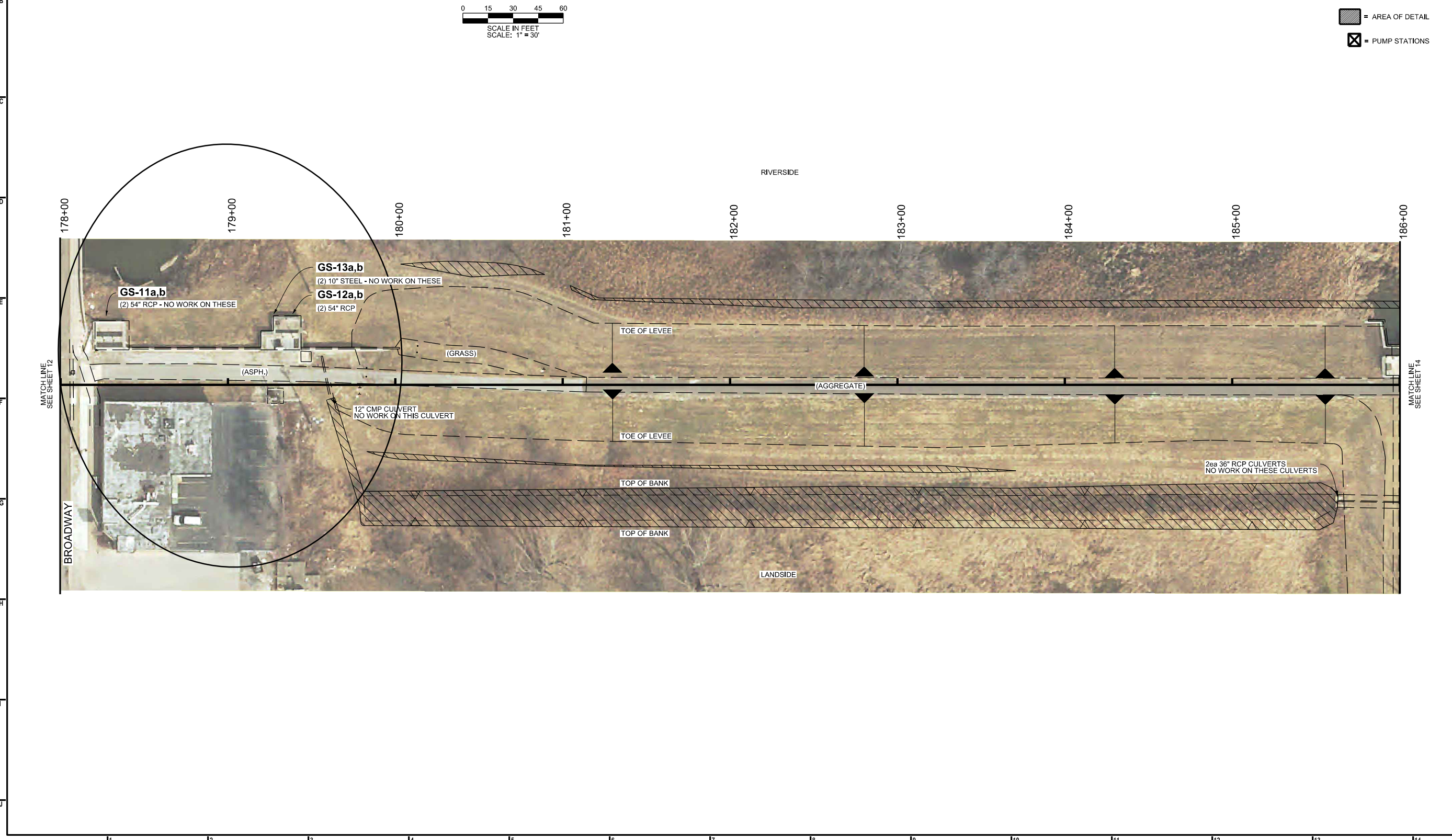


Little Calumet River Basin Development Commission

900 Ridge Road, Suite H
Munster, IN 46321



- = AREA OF DETAIL
- = PUMP STATIONS



REVISION	DESCRIPTION	DATE

PRELIMINARY

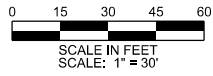
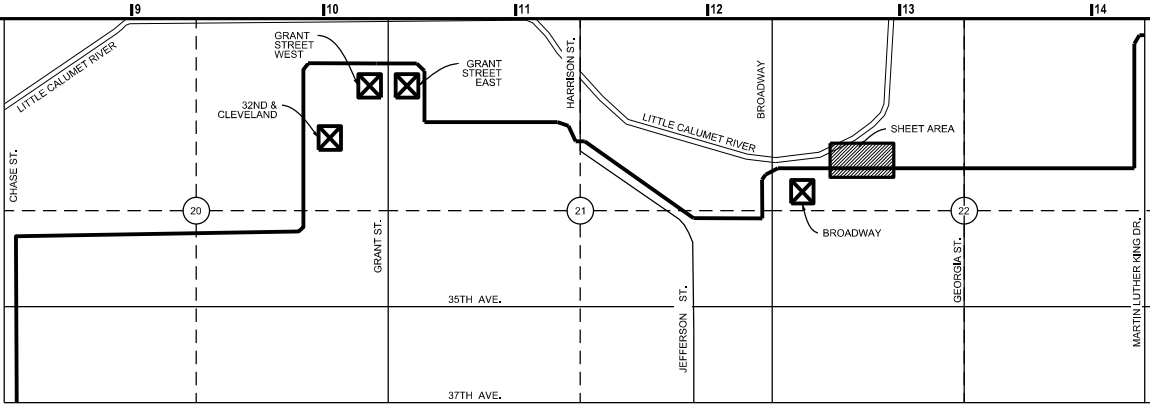
Existing Levee
Sta. 178+00 to 186+00

**Gary South Levee
Culvert Maintenance**



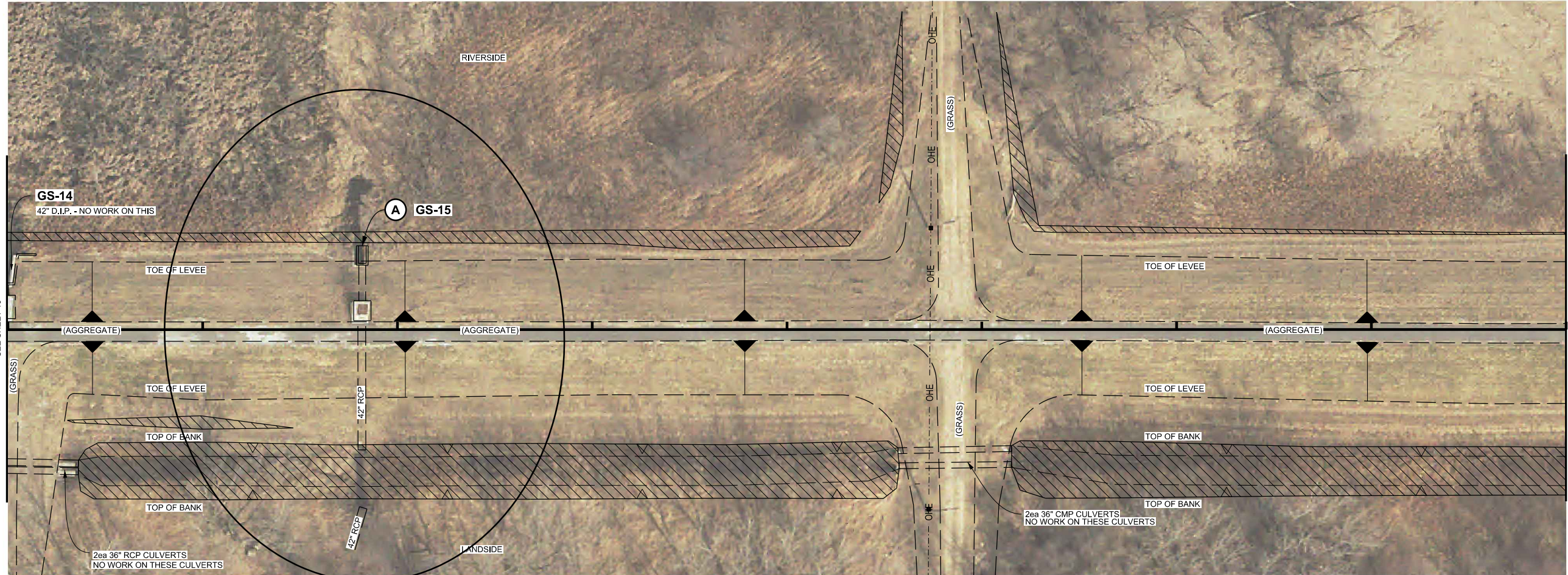
Little Calumet River Basin Development Commission

900 Ridge Road, Suite H
Munster, IN 46321



▨ = AREA OF DETAIL
⊗ = PUMP STATIONS

186+00 187+00 188+00 189+00 190+00 191+00 192+00 193+00 194+00



MATCH LINE
SEE SHEET 13

BREAK LINE
NO WORK STA. 194+00 TO 202+00
SEE SHEET 15

A STRUCTURE MAINTENANCE

- REMOVE DEBRIS ON RIVERSIDE AND LANDSIDE OF FLOODWALL
- FLAPGATE ON RIVERSIDE SHALL BE EXERCISED TO VERIFY PROPER OPERATION
- EXERCISE SLUICE GATE, GREASE TO VERIFY PROPER OPERATION
- CLEAN 1 PIPE (42" DIA. @ 95 LF.)
- TELEWISE 1 PIPE EMPTY

REVISION	DESCRIPTION	DATE

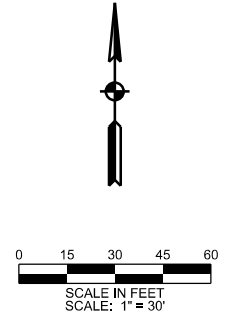
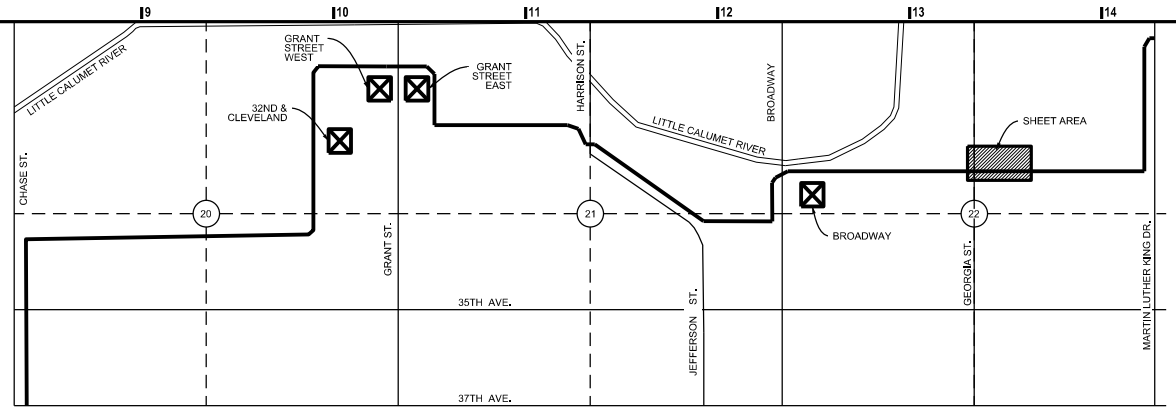
PRELIMINARY

Existing Levee
Sta. 186+00 to 194+00

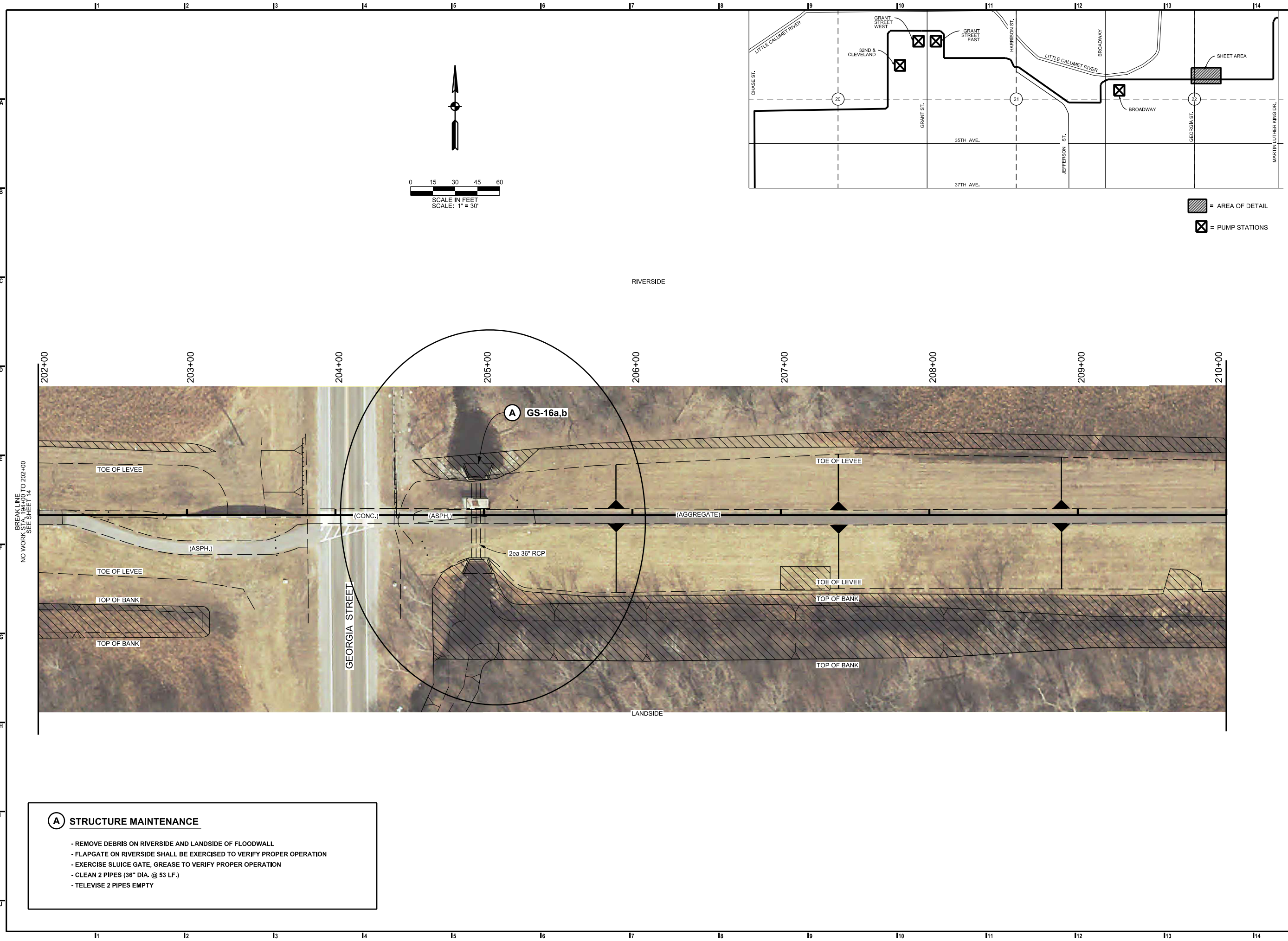
**Gary South Levee
Culvert Maintenance**



Little Calumet River Basin Development Commission
 900 Ridge Road, Suite H
 Munster, IN 46321



▨ = AREA OF DETAIL
 ⊠ = PUMP STATIONS



BREAK LINE
NO WORK STA. 194+00 TO 202+00
SEE SHEET 14

- A STRUCTURE MAINTENANCE**
- REMOVE DEBRIS ON RIVERSIDE AND LANDSIDE OF FLOODWALL
 - FLAPGATE ON RIVERSIDE SHALL BE EXERCISED TO VERIFY PROPER OPERATION
 - EXERCISE SLUICE GATE, GREASE TO VERIFY PROPER OPERATION
 - CLEAN 2 PIPES (36" DIA. @ 53 LF.)
 - TELEWISE 2 PIPES EMPTY

REVISION	DESCRIPTION	DATE

PRELIMINARY

Existing Levee
Sta. 202+00 to 210+00

Gary South Levee Culvert Maintenance